

KROSYS

KROSYS
COMPANY PROFILE
2016





I. Company Profile

Overview
Strategic point
Clients

II. Product & Service

Fresh Water Generator
Mobile RO Desalination Unit
Water Treatment Plant System
Offshore Engineering Service
Others

III. Others

I. Company Profile





General Information



Overview



PRODUCT Reverse Osmosis Desalination System

COMPANY KROSYS INC.

PRESIDENT Jung Kyu PARK

ADDRESS 72-1 Sinsan St., Saha, Busan
Tel : 82-51-220-9900
Fax : 82-51-220-9999

Email krosys@krosys.com

WEB SITE www.krosys.com

History

- 1984** Kyung-Chang was established as an Enterprise
- 1985** Installed 1st commercial RO Unit at Dokdo Island
- 1993** Got type approval of RO FWG for Navy vessel
Exclusive supply of RO FWG to Korean Navy
- 1999** Takeover Pacmar Inc, seattle, WA for Fin-Stabilizer Business
- 2000** Renamed to KROSYS Inc.
Exclusive supply of ROWPU to Korean armed forces
- 2001** Registered as Core Defense Material Maker by MND (Ministry of National Defense)
- 2010** Mobile RO Desalination unit (3,000LPH & 500LPH) for DSTA, Singapore
- 2011** Moved Head Office to Busan, Korea
- 2013** Preferred bidder in PKX Project with MJP
- 2014** EPC for 4,800TPD Desalination unit for Prelude FLNG





Quality System

ISO 9001



ISO 14001



OHSAS 18001





Manpower

- 30% of our engineers are field service Engineers
- Skillful and trained technicians for marine systems
- Our engineers have retrofit capabilities for existing ships

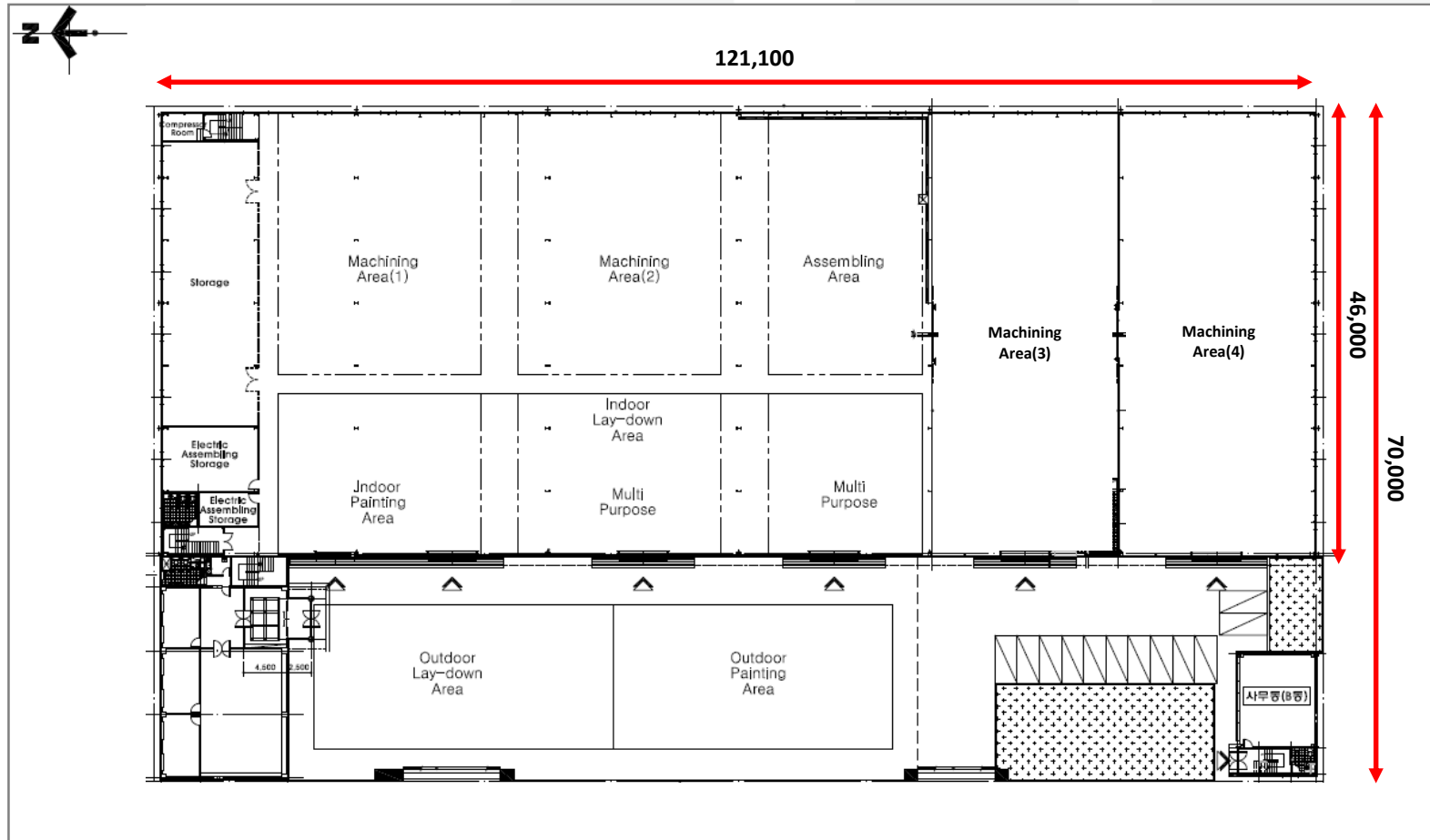


As of 2014.02.10

	Field service Engineer	Manufacturing	Design	Sales	Management	Total
Employees	23	13	13	11	19	79

Factory Lay-out

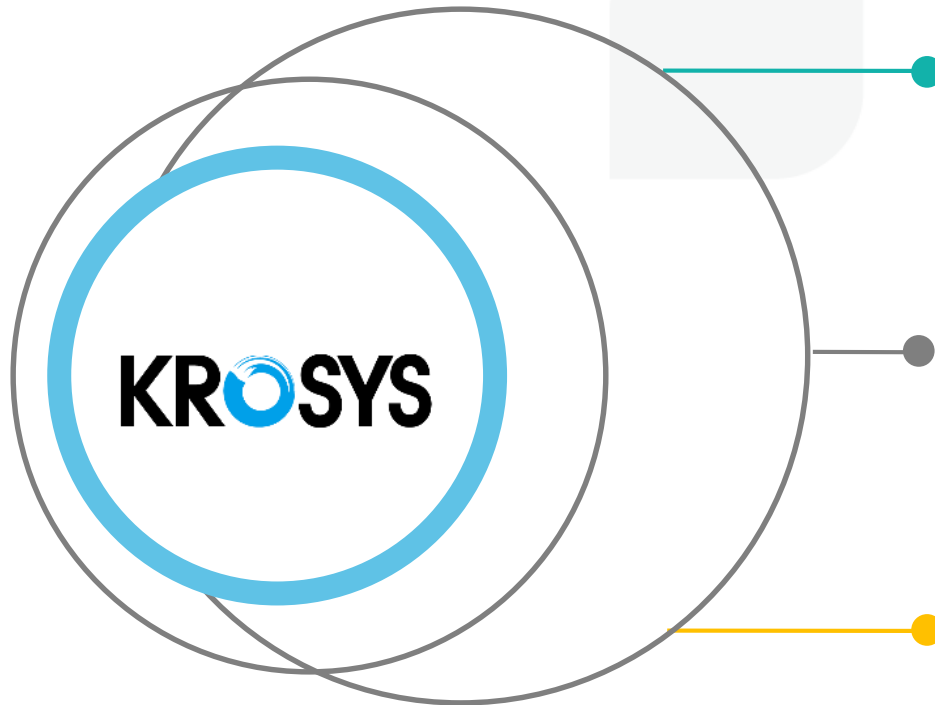
- **Workshop : 5,570 Sq. meter**





Strategic Point

Strategic Points



Experience

Excellent professional relations and accord with both domestic and overseas clients
High reputation and trusted partner in business

Capabilities

Production, design and After Sales abilities
Visionary management, Efficient organization and skilled manpower

Field Proven Quality

More than 90% domestic market share
Preferred Supplier for both Govt. and MNC's

Strategic Points

■ Extensive Experience

- Supplied more than 3,600 units of water systems globally
- Efficient organization and management
- Built excellent market references from clients since last 30 years

Customers

- Shipping companies
- Fisheries companies
- Major water related companies
- Government agencies across the world

Shipbuilding industries

- All major shipbuilders
- All major domestic naval architects consultancies

Strategic Points

■ Production, Design, After Sales(A/S) Capabilities

● Design capabilities

- High academic background in the industries
- Qualified designers and skilled workers
- Skillful and high loyalty employees
- Vast experiences of project management and quality management systems

● Production capabilities

- Modern and well equipped moderate sized production shop
- Reserved space for future up-grade

● After-sales service capabilities

- Skillful and trained technicians for water systems
- Experience in various projects related customers and products
- Capabilities for understanding issues and providing optimal solutions



Strategic Points

■ **Field Proven Quality**

- 90% domestic market share
- Continuously improve our supply & performance record in the global market
- Meet the current industry requirements & particular customer's needs
- High quality material and precise assembly / fabrication of product range

Major Clients



II. Products & Service





Fresh Water Generator



Product Line

Fresh Water Generator



Seawater Desalination Plant



Mobile Water Purification System



Fresh Water Generator For Offshore

- Customer : Offshore Oil, Gas & Drilling
- Capacity : 50 ~ 100 ton/day
- All corrosion resistant and explosion-proof materials
- Major References
 - Doosung Drilling Rig
 - CJ46-1000D
 - Ah-Yang Accommodation Barge
 - Gulmar Davinci



Fresh Water Generator For Military

- Customer : Navy and Coast Guard
- Capacity : 10 ~ 50 ton/day
- Exclusively supplying for the Navy and KCG ships/boats
- More than 500 Units are supplied



Fresh Water Generator For Industrial Use



Up to 2TPD



Up to 6TPD



Up to 300TPD





Mobile RO Desalination Unit

Mobile RO Desalination Unit Truck & Trailer-mounted

- Truck & Trailer mounted type
- Fully self-contained automatic system
- Truck and Heli-portable type
- Drinking water supply from any polluted Water including CBR warfare agents and seawater
- Supply MWPU for military forces Including Korea and Singapore



Mobile RO Desalination Unit Truck & Trailer-mounted

Any Raw Water Sources

Drinking water despite all kinds of contaminants

Small Foot Print

Integrated in an ISO container of 20 ft. or 40 ft.

Easy Access for Maintenance

Generator sliding-skid for cleaning and maintenance

Truly Mobile System

Truck-mounted design that fits within one standard trailer

High Quality Drinking Water

Drinking water fulfills the portability requirements



Mobile RO Desalination Unit Truck & Trailer-mounted



Mobile RO Desalination Unit Truck & Trailer-mounted

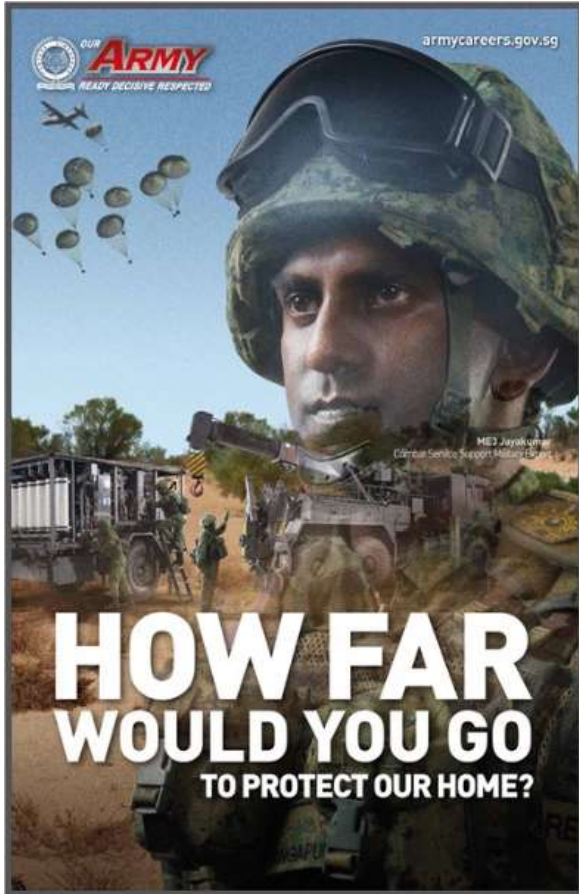


Model	KRO-040-MTS
Capacity	40 TPD (3,000 LPH)
Quality	Meets for STANAG 2136
Features	Drinking water supply during CBR warfare
Dimension	4,000 x 2,100 x 1,610 (H) mm
Weight	4,641 Kg (Dry)
Reference	28 units



Model	KRO-012-MTS
Capacity	12 TPD (500 LPH)
Quality	Meets for STANAG 2136
Features	Heli-portable, Small-footprint
Dimension	1,800 x 1,400 x 1,300 (H) mm
Weight	1,100 Kg (Dry)
Reference	5 units

Mobile RO Desalination Unit Truck & Trailer-mounted



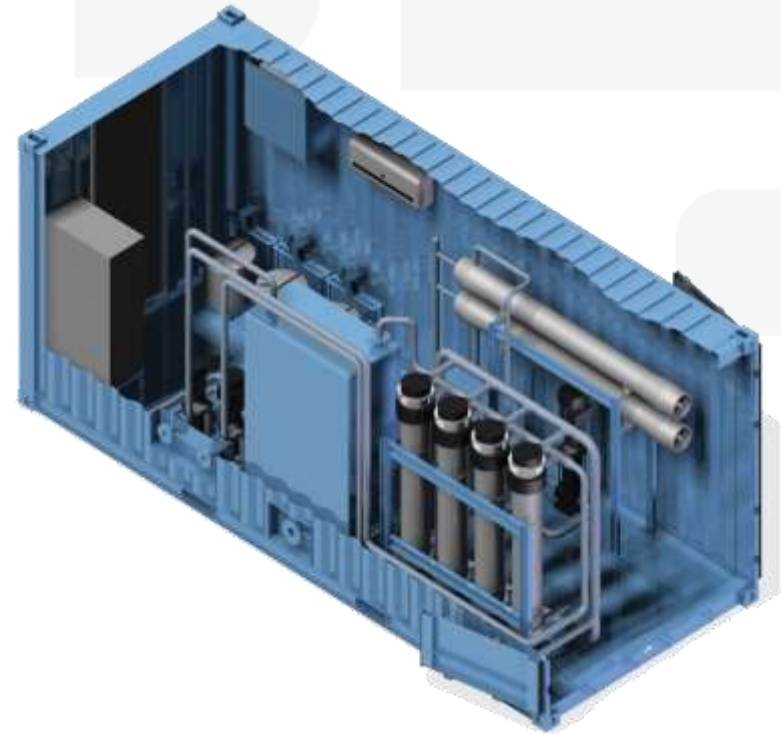
Mobile RO Desalination Unit Truck & Trailer-mounted

Model	KRO-016-MIS
Clients	MHI-TES, Japan
Capacity	16 TPD
Quality	TDS - <500 ppm
Features	Water Supply for Bangladesh residents
Dimension	2,800 x 1,500 x 1,650 (H) mm
Weight	1,086 Kg (Dry)
Reference	30 units

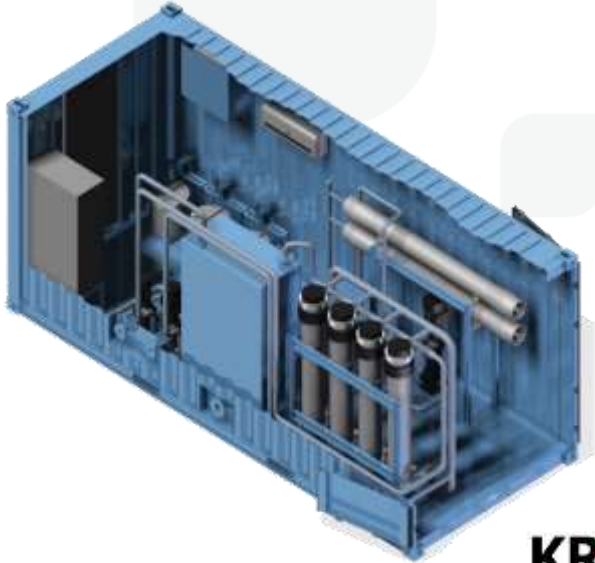


Mobile RO Desalination Unit Container & Portable

- Integrated in an ISO container of 20ft. Or 40ft.
- Relief operations for the natural disaster
- Easy installation & operation



Mobile RO Desalination Unit Container & Portable



Mobile RO Desalination Unit Portable Type

Model	KRO-050-MTS
Clients	MHI-TES, Japan
Capacity	50 TPD
Quality	TDS - <500 ppm
Features	Disaster relief
Dimension	UF Unit : 2,300 x 1,900 x 1,800 (H) mm RO Unit : 2,000 x 1,900 x 1,800 (H) mm
Weight	UF Unit : 1,300 Kg (Dry) RO Unit : 1,600 Kg (Dry)



Mobile RO Desalination Unit Containerized



GS E&C JEJU PROJECT	
Customer	GS E&C
Location	Jeju Island, Korea
Features	SWRO+BWRO+NF
Feed Water	Seawater
Capacity	40TPD
Year, Built	2011

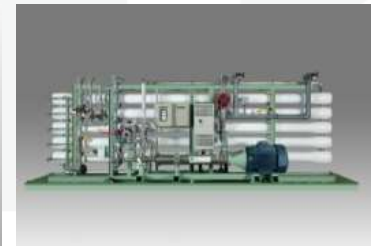
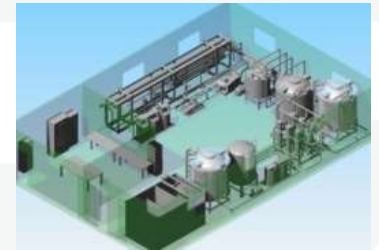
KICT 2010 PROJECT	
Customer	KICT
Location	Busan, Korea
Features	System Pressure Exchanger (PX)
Feed Water	Seawater
Capacity	500TPD
Reference	2010



Water Treatment Plant System

Water Treatment Plant System SWRO System

- Pure water production for various industrial process and applications
- Production capacity up to 20,000 TPD



Water Treatment Plant System SWRO System

CJJV / TORAY PNG LNG Project	
Customer	Exxon Mobil
Location	Papua New Guinea
Application	LNG Power Plant
Production Capacity	4,000 TPD (1,000TPD x 4 blocks)
System	DMF + SWRO
Year, Built	2010



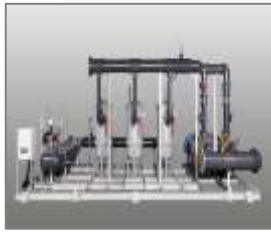
SWRO Unit



DMF UNIT



CIP Unit



SWRO Feed Pumps Unit



Service Water Pumps Unit

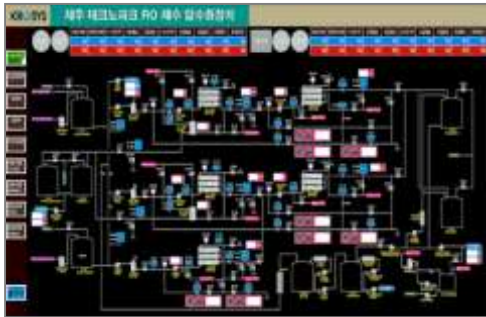
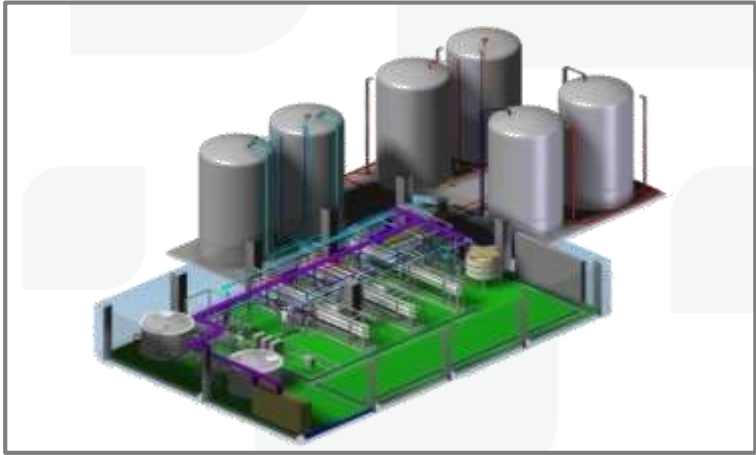
Water Treatment Plant System SWRO System

Amanpulo Project	
End User	Aman Resorts
Location	Philippines
Application	Drinking water Production
Production Capacity	300 TPD
System	DMF + SWRO + U.V.
Year, Built	2011



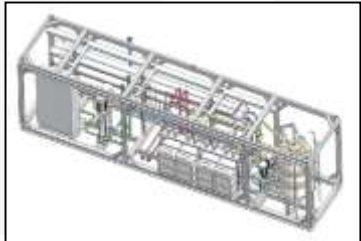
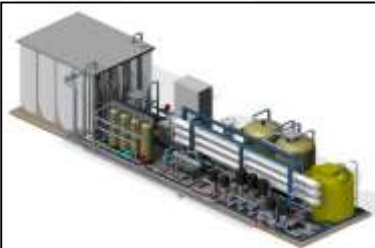
Water Treatment Plant System SWRO System

Jeju Magma Seawater Project	
End User	Jeju Magma Seawater Agency
Location	Jeju Island, Korea
Application	Drinking water & Boiler water production
Production Capacity	500 TPD (250TPD x 2 blocks)
System	SWRO + BWRO
Year, Built	2010



Water Treatment Plant System BWRO System

- Pure water production for various industrial process and applications
- Production capacity up to 20,000 TPD



Water Treatment Plant System BWRO System

LNG FSRU Project	
End User	PGN(PERUSAHAAN GAS NEGARA(PERSERO)TBK.
Location	Lampung, Indonesia
Application	LNG FSTU
Production Capacity	7.7 Ton/Hour
System	MMF + BWRO + AC F
Year, Built	2013



Project for Social Contribution

■ Water Supply kit for Congo residents

- 2,000 water supply kits were supplied from 2013 to 2014 for Congo residents and offer them good quality water. This project was coordinated with Korea and Brazil companies. The supplied water kit treats raw well water as feed and produce treated potable water for drinking to residents.



Project for Social Contribution

- Mobile Water treatment system as a disaster relief in Japan**
 - 100 Mobile water treatment systems were supplied to Japan after the TOHOKU earthquake and tsunami in 2011 . The systems were installed near polluted reservoir / river and each MWTS produced 5 ton per day clean water for drinking to the local population affected from the disaster.**

크로스스, 日피해지역에 정수장치 공급

입력: 2011-09-04 17:26:52 수정: 2011-09-25 11:58:36

100여대--대형설비도 제작으로

해수담수화장비 전문업체 크로스스(대표 박종규)가 일본 도호쿠 지역해일 피해 지역의 비상 식수 공급을 위해 해수담수화장비(사정)를 이종형 정수장치로 개조, 대량 공급하기로 했다.



이 회사는 일본 도제이시로부터 정수용 필터를 공급받아 이를 정수장치를 조합, 설치가 용이한 및 핵심 피해 지역에 전달하기로 했다고 24일 밝혔다. 자진해일로 오염된 담수도와 강, 저수지 인근에 설치해 상수도로 사용토록 할 예정이다.

이렇게 크로스스 차장은 "일본 도제이시로부터 비상 식수의 정수장치 공급 요청을 받았다"며 "구조 차원에서 이종형이 생산원가 이하로 이를 공급하기로 했다. 당여러 장비는 하루 250여대에 달 식수를 제공할 수 있다.

이 회사는 우선 비상 식수로 활용토록 하기 위해 하루 5톤 처리할 수 있는 장비 100여대를 보내고 100대 및 300여대 대형 장비도 제작, 공급하기로 했다. 당여러 장비는 하루 250여대에 달 식수를 제공할 수 있다.

1974년 설립된 이 회사는 해수담수화장비를 국내외 총으로 연간 100여대를 공급하고 있다.





Offshore Engineering Service

Offshore Engineering Service

- **Temporary Desalination Unit for Shell Prelude-FLNG Project**

TPF-TDU Project	
Model	KRO-4800-SOD
Client	Technip France
Project	Prelude FLNG for SHELL
Capacity	1,200 ton/day*block x 4 blocks
Product quality	TDS: <5 ppm, DO: <100 ppb
Work Period	2013.09 ~ 2014.06
Scope of Work	Engineering, Construction, Supply & Installation, Commissioning, Operating



Offshore Engineering Service

■ Carry over works

FWG on HHI Goliat FPSO Project	
SKID	Fresh water Generator(HQ84)
Client	ENI
VENDOR	MEMBRANE
Work Period	2012. 10 ~ 2014.05
Scope of Work	Dismantling original skid. Design new structure, Construction, Supply & Installation main equipment. Material handling and preservation. Inspection and Test.



Engineering Service

■ Technical Service

- Registered as Technical Supply Vendor of GE
- Technical support to solve problem during construction and commissioning.

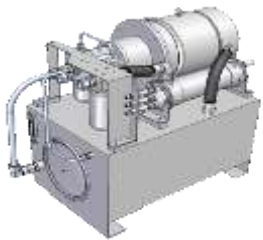




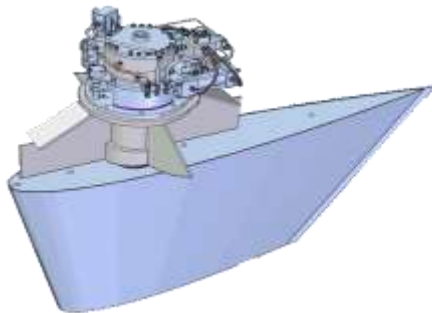
Fin Stabilizer

Fin Stabilizer

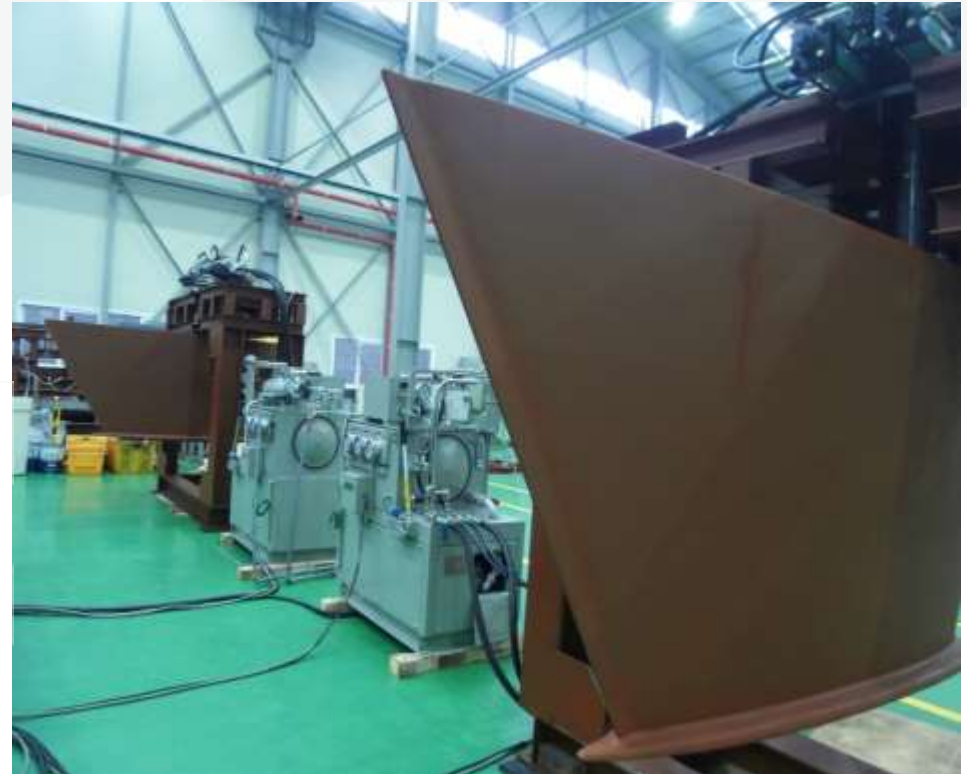
- Since 1999 onwards, Krosys takeover Pacmar Inc., Seattle Wa
- Reference includes navy, KCG, Other government agencies and Major shipbuilders



Hydraulic Power Unit



Actuator & Blade





Water Jet Propulsion System

Water Jet Propulsion System

- High performing and localized jet system
- Designated as preferred bidder
In PKG project with MJP

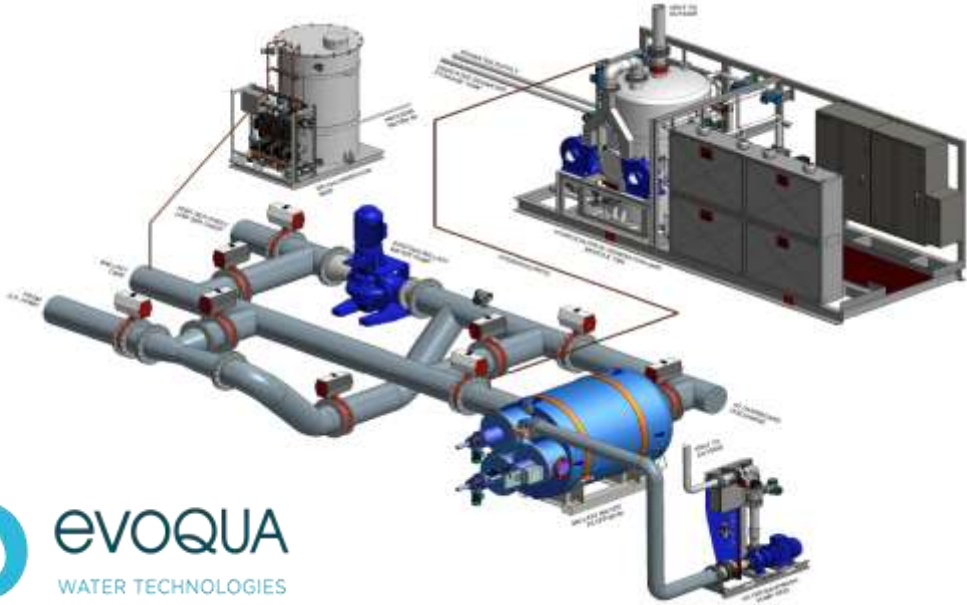




BWMS(Ballast Water Treatment System)

BWMS

- Franchise Business partner with Evoqua Water Technology Inc.
- SeaCURE™ Ballast Water Management System (BWMS)



USCG Test container – Chloropac System



Installed on MERC Barge in Baltimore

THANK YOU

